



Research Development: Schwarzman College of Computing (SCC)  
Administrators Monthly Meeting January 9, 2025

# The Research Development Team



**Susan Gomes**

Director of Research Development

[sogomes@mit.edu](mailto:sogomes@mit.edu)



**Tannu Singh**

Program Manager

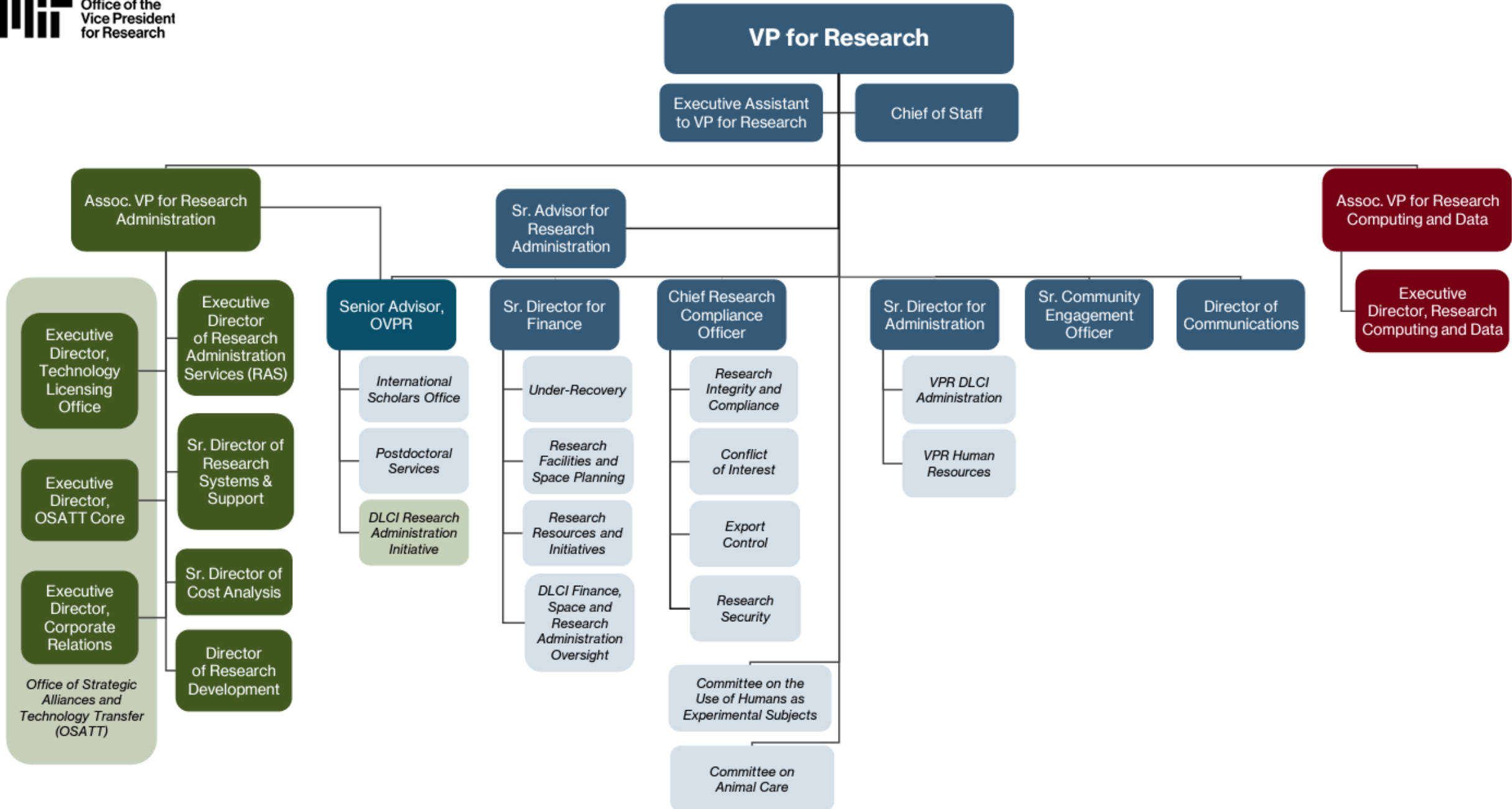
[tarnjit@mit.edu](mailto:tarnjit@mit.edu)



**Karen Wang**

Sr. Research Development Officer

[kjxwang@mit.edu](mailto:kjxwang@mit.edu)



# Agenda

- Introduction to Research Development
- Limited Submission Process
- Large-scale Proposal Support
- General Grantsmanship Resources

# Agenda

- **Introduction to Research Development**

- Limited Submission Process

- Large-scale Proposal Support

- General Grantsmanship Resources



# What is Research Development?

- **Research Development** encompasses a set of strategic, catalytic, and capacity-building activities that advance research, especially in higher education.
- **Research Development and Research Administration are distinct yet complementary disciplines.** While Research Administration focuses on the operational and administrative aspects of proposal preparation and ensures compliance with institutional and funding agency policies, **Research Development focuses on enhancing the quality, impact, and competitiveness of the research proposal.**

Limited  
submissions

Large-scale  
proposal support

Early-career  
programming

General  
grantsmanship  
resources

# Research Development: (Pre)Pre-Award Phase

Key players at this stage:

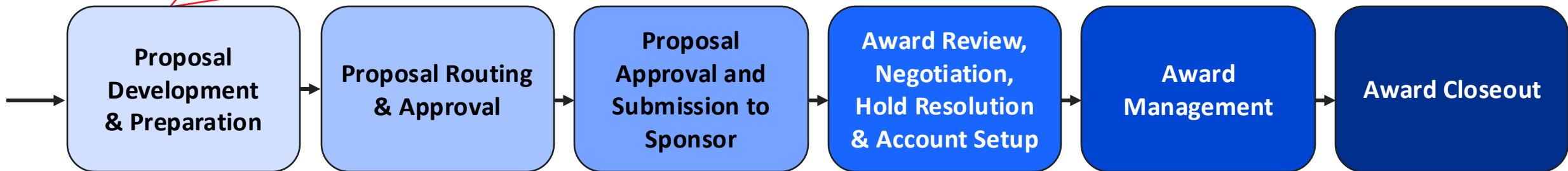
PI

DLCI Administrators

Research Development

OSATT Catalysts – industry sponsored agreements

OFR – foundation sponsored agreements



More information regarding the award lifecycle

# Agenda

- Introduction to Research Development
- **Limited Submission Process**
- Large-scale Proposal Support
- General Grantsmanship Resources





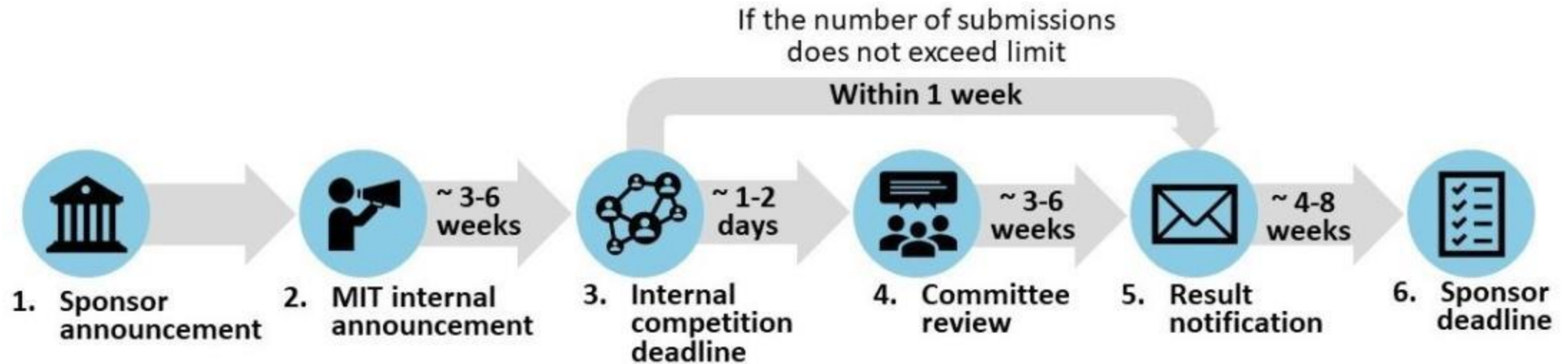
**Tannu Singh, Program Manager**

Limited Submissions and Internal Funding

# Limited Submission Opportunities

- [Limited submissions](#) are funding opportunities where the sponsor restricts the number of applications that may be submitted by MIT.
- Research Development, on behalf of the OVPR, hosts internal competitions to select which applicants may move forward in the submission process.
- **Listings and Submission Portal:**  
<https://mitfunding.infoready4.com/>

# Limited Submission Process



- Please note: The timeline is for reference only. Actual timelines depend on sponsor deadlines and proposal complexity. Expedited timelines may be used to accommodate short turnarounds set by sponsors, while internal processes for large-scale projects may start earlier to allow sufficient preparation time.

# Agenda

- Introduction to Research Development
- Limited Submission Process
- **Large-scale Proposal Support**
- General Grantsmanship Resources



**Karen Wang, Ph.D.**  
**Senior Research Development Officer**

Large-scale Proposal Support  
Proposal Development Support

# How we define large-scale proposals

## Characteristics of large-scale proposals

<b>Project duration</b>	Variable, spanning several years to 10+ years
<b>Award amount</b>	Several million to tens of millions of dollars in total
<b>Partners</b>	Multiple partners (e.g., vendors, contractors, or subaward institutions) with associated needs for contract negotiation, intellectual property negotiation, diverse cost share requirements, and pre- and post-award budgeting challenges
<b>Discipline</b>	Multidisciplinary, interdisciplinary, or transdisciplinary; requires the integration of knowledge to solve an overarching problem
<b>Scope</b>	Addresses complex scientific problems based on national grand challenges or agency strategic plans
<b>Impact</b>	Research must be transformational instead of incremental and may not fit in established models or theories; can be high risk, high reward; results in new approaches or methodology; may have the potential for new technologies development and commercialization
<b>Synergy</b>	Must possess and communicate a shared vision; must demonstrate that the whole is greater than the sum of its parts; must demonstrate the value added by the proposed team structure
<b>Development complexity</b>	More complex to plan and develop; involves coordination between more institutions and team members; requires more non-disciplinary components (e.g., tech transfer plans, workforce development plans, education and outreach plans, management plans, evaluation plans)

# Types of support for large-scale proposals

## Strategic Insight

- Funding program analysis
- Sponsor analysis

## Project Management

- Create checklist and timeline, support PI assign roles and responsibilities, track progress
- Help navigate internal processes
- Coordinate expert reviews

## Content Development

- Identify broader impact resources
- Consultation for non-technical components

## Document Review/Editing

- Review for responsiveness to solicitation/past reviewer comments
- Edit for flow, clarity, voice and consistency
- Proofread



# Level of Support

- The services offered to each team will be determined on a case-by-case basis after an initial conversation with the PI. These will vary depending on PI/DCLI needs, proposal requirements, our team's staff availability, and timing.
- We encourage PIs seeking support and administrators to reach out to us **as early as possible**
- While we primarily support large-scale proposals at this time, all researchers (faculty, research scientists, postdocs, students, etc.) are encouraged to explore our online resources.

# Case Study: NSF Materials Research and Science Engineering Centers (MRSEC)

- **Apr – May 2024** Developed a Call for Proposals to help select Interdisciplinary Research Groups (IRG's) to participate in the proposal
- **Aug – Sep 2024** Supported and facilitated retreats to catalyze the formation of IRG's and team; Connected PI with Lloyd Munjanja who will lead effort to develop MRSEC Outreach and Education Strategy
- **Dec 2024** Organized and managed a day long on-campus meeting to facilitate external reviews for IRG groups
- **Jan 2025** NSF publishes new solicitation for 2025 MRSEC
- **2025 (ongoing)** Recommend resources that would strengthen the proposal and facilitate the procurement of resources (e.g., scientific editing, external reviews for IRG proposal selection and preliminary proposal)
- **2025 (ongoing)** Project management support for preliminary proposal (In progress)

# FY 24-25 Task Force on Large Scale Proposal Development

- Identify existing support structures for large-scale proposals and gaps
- Identify the major pain points and barriers to large-scale proposal development (pre-award and post-award)
- Collect data on best practices and resource allocation for large-scale proposal development from peer institutions, including return on investment
- Solicit feedback from MIT stakeholders on the structures, resources, and types of support that would facilitate large-scale, complex proposal development

# Agenda

- Introduction to Research Development
- Limited Submission Process
- Large-scale Proposal Support
- **General Grantsmanship Resources**

# Research development resources

[Research Development landing page](#)



Office of the VPR	Labs, Centers and Institutes	Security, Integrity and Compliance	<b>Research Development</b>	Research Policies and Procedures	Research Resources
-------------------	------------------------------	------------------------------------	-----------------------------	----------------------------------	--------------------

[Print/Save to PDF](#)

[Home](#) / [Research Development](#)

## Research Development

Research Development at MIT is a unit within the [Office of the Vice President for Research](#) tasked with strategically leveraging resources to increase MIT's research competitiveness. In particular, Research Development staff work directly with faculty, Institute administration, strategic partners and funders to facilitate research program funding.

Research Development's responsibilities include:

- Overseeing and managing institutionally limited submission funding opportunities
- Disseminating institutionally limited funding opportunities via the [MIT Fund Ops listserv](#)
- Developing resources and programming to raise awareness of relevant funding opportunities and enhance proposal competitiveness
- Managing the institutional endorsement process on behalf of the Office of the Vice President of Research for select internal funding opportunities and prestigious fellowships
- Providing advice and guidance for managing school and departmental level internal funding competitions, including using [InfoReady](#)

- ▶ [Limited Submissions](#)
- ▶ [Early Career Funding Guide](#)
  - [Foundation Funding](#)
  - [Internal Funding Opportunities](#)
  - [Pivot Comprehensive Funding Search Tool](#)
- ▶ [Postdoctoral Fellowships](#)
- ▶ [Prestigious Prizes and Awards](#)
- ▶ [Proposal Development](#)
  - [Research Development & Grant Writing News](#)

# Resources for finding funding opportunities

## Annual Calendar of Limited Submissions

**Office of the Vice President for Research**

**Limited Submission Opportunities - Recurring Calendar**

Please Note:  
Deadlines are general and may differ from year to year depending on when a competition is announced by the sponsor.  
All announcements of LSO competitions will be disseminated by Research Development to mitfundops listserv and posted on <https://mitfunding.infofored4.com>.  
Faculty may not apply directly for LSOs without institutional endorsement.  
If you are interested in applying for an LSO that is not on this list, please bring it to our attention as soon as possible by sending an email to [researchdev@mit.edu](mailto:researchdev@mit.edu).  
Last Updated: 9-4-2024

Award Program	Sponsor	Anticipated Internal Deadline	Anticipated Sponsor Pre-proposal or Letter of Intent Deadline (if applicable)	Anticipated Sponsor Deadline	Limitation on Number of Applications
1 Mathers Foundation Grants Program	Dr. Harold and Letta Y. Mathers Charitable Foundation	Spring cycle: Early January Fall cycle: Mid June	Spring cycle: Late February (nomination & portal registration), Mid March (LOI) Fall cycle: Mid September (nomination & portal registration), Early October (LOI)	Spring cycle: Late May Fall cycle: Mid December	Four (4) applications per cycle
2 Breakthrough Science Initiative Awards Program (Onco Initiative)	Onco Pharma Foundation	Mid January	Mid February	Early May	Two (2) applications per institution
3 Packard Fellowships for Science and Engineering	David and Lucile Packard Foundation	Late January	Mid March (Nomination)	Late April	Two (2) nominations per institution
4 Agilent Early Career Professor Award (AECPA)	Agilent Technologies	Mid January	Mid February	Late February	1-2 nominations per university
5 NSF National Quantum Virtual Laboratory (NQVL) Quantum Science and Technology Demonstrations (QSDTs) - Pilot Phase	NSF	Mid January	Early April	Mid June	One (1) QSDT Pilot proposal per organization
6 New Innovator in Food and Agriculture Research Award	Foundation for Food and Agriculture Research (FFAR)	Mid January	Late February (Nomination)	Early April	One (1) nominee per institution
7 Beaman Prize for Creative Innovation	Regeneron	Late January	Late January	Early March Catalyst: Early August	Two (2) postdoc nominations per invited institution

## MIT Funding Opps Listserv

MITfundops – Limited solicitation and other funding news and opportunities

About MITfundops

English (USA)

MIT FUNDOPS: Funding Opportunities, Announcements, and Internal Competitions for the MIT Community

To see the collection of prior postings to the list, visit the [MITfundops Archives](#). (The current archive is only available to the list members.)

Using MITfundops

To post a message to all the list members, send email to [mitfundops@mit.edu](mailto:mitfundops@mit.edu).

You can subscribe to the list, or change your existing subscription, in the sections below.

Subscribing to MITfundops

Subscribe to MITfundops by filling out the following form. You will be sent email requesting confirmation, to prevent others from gratuitously subscribing you. Once confirmation is received, your request will be held for approval by the list moderator. You will be notified of the moderator's decision by email. This is also a hidden list, which means that the list of members is available only to the list administrator.

Your email address:

Your name (optional):

## Pivot tutorial Pivot webpage

Tracked Opps

Your Profile

Groups

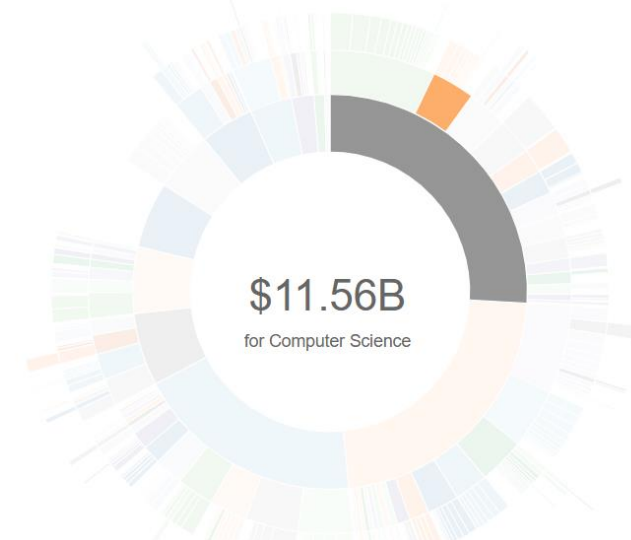
### Funding Discovery

To keep pace with growing and evolving research fields, our expert editors continuously update an authoritative list of keywords that are carefully matched to each funding opportunity. Enter search terms above or browse by keyword to explore the latest funding opportunities and research trends.

### Browse by Keyword

This chart is interactive. You can mouseover a section to see the total amount available per keyword. Click a section to view the list of matching opps. (Amount normalized to USD.)

Natural and Physical S... Computer Science




# Foundation Directory Online

[Foundation Directory Online](#)

**Candid.**

The screenshot shows the top navigation bar of the Foundation Directory Online website. The main header is yellow with the text "Foundation Directory" on the left, and "Help", "Chat", and a user profile icon on the right. Below this is a grey navigation bar with "Professional" on the left, "Find funding", and "Resources" on the right. The main content area has a blue background with a globe graphic and the text "Win more grants and make a bigger difference. Find the right funders now." Below this is a search bar with a "SEARCH" button and a link to "Advanced Search & Filters". The search bar contains the text "Examples: Ballet school in New York City; Animal shelter in Portland, ME; Food pantry in Dallas". Below the search bar are three checkboxes: "Include U.S. Federal Funders" (checked), "Include grants to individuals" (unchecked), and "Search by Organization" (checked) and "Search by Person" (unchecked).

Foundation Directory





Help ▾ Chat 

Professional Find funding Resources

Win more grants and make a bigger difference.  
Find the right funders now.

[Advanced Search & Filters](#)

Examples: Ballet school in New York City; Animal shelter in Portland, ME; Food pantry in Dallas **SEARCH**

 Include U.S. Federal Funders   Include grants to individuals   Search by Organization   Search by Person



# Resources for writing proposals – general tips

## [Research Development & Grant Writing Newsletter](#)

Research Development subscribes to *Research Development & Grant Writing News*, a newsletter from [Academic Research Funding Strategies, LLC](#), that covers topics in finding funding and proposal development. Browse recent issues below.

Research Development & Grant Writing News	
Issue	Highlights
<a href="#">December 2024</a> <a href="#">[PDF]</a>	December 2024 <ul style="list-style-type: none"><li>• Select List of Humanities, HSS, and Arts Opportunities &amp; News</li><li>• Does Your Humanities Proposal Have Inside and Outside Appeal?</li><li>• Funding: Artificial Intelligence &amp; the Future of Work</li><li>• Changes to EPA Notices of Funding Opportunity</li><li>• NSF Funding for AI Education, Training and Broadening Participation</li><li>• NIH's New Science of Science Scholars Program Pilot</li><li>• In Proposals, Less is Often More</li></ul>
<a href="#">November 2024</a> <a href="#">[PDF]</a>	November 2024 <ul style="list-style-type: none"><li>• Select List of Humanities, HSS, and Arts Opportunities &amp; News</li><li>• NIH Replication to Enhance Research Impact Initiative</li></ul>



### Our Co-Publisher & Editors

#### Mike Cronan

[Mike Cronan](#), PE, has 23 years of experience developing and writing successful team proposals at Texas A&M University. He was named a Texas A&M University System Regents Fellow (2001-2010) for developing and writing A&M System-wide grants funded at over \$100 million by NSF and other funding agencies. He developed and directed two research development and grant writing offices, one for Texas A&M's VPR and the other for the Texas A&M Engineering Experiment Station (15 research divisions state-wide), including the Texas A&M College of Engineering.

#### Lucy Deckard

[Lucy Deckard](#) (BS/MS Materials) worked in research development and grant writing at Texas A&M University and across the A&M System for nine years. She directed A&M's New Faculty Research Initiative (2004-09), helping junior faculty System-wide jumpstart their research careers with federal agency funding. She served as associate director of two research development and grant writing offices. She founded [ARFS](#) in 2010.

#### Katherine E. Kelly

[Katherine E. Kelly](#), Ph.D., a retired English professor from Texas A&M University, is the author of several books and numerous articles supported by research grants and served as a contributing editor for an academic journal for five years. She provides ARFS clients editorial services on proposals, journal articles, and manuscripts and presents seminars on grant writing and funding in the humanities.

### About Us

Research Development & Grant Writing News © has been published monthly since 2010 for faculty and research professionals by [Academic Research Funding Strategies, LLC](#).

#### Co-Publishers

[Mike Cronan](#) & [Lucy Deckard](#)

#### Humanities Editor

[Katherine E. Kelly](#)

#### Newsletter Design

Emily Creasy, head of [ELC Design](#), is our [graphics partner](#). In addition to redesigning our newsletter, she provides graphics services on proposals, presentations, books and papers. [Subscribe Online](#)

Copyright 2024.  
All rights reserved.

# Resources for writing proposals – societal impacts

## NSF Broader Impacts

- [Broader Impacts statement guidance](#) developed by the School of Science (applicable to all PIs)
- [Advancing Research Impacts in Society](#)
  - [Broader Impacts Toolkit](#)
  - [Current State of Broader Impacts Report](#)
  - [Evolution of Broader Impacts Report](#)
  - [Broader Impacts Guiding Principles](#)

## DOE PIER Plan

### I. Project Specific Activities and Strategies to Promote Equity and Inclusion

#### Introductory Paragraph

*Including, but not limited to:*

- Statement that your PIER plan will outline the specific activities and strategies that you will incorporate to enhance the scientific and technical merit of your project by promoting diversity, equity, and inclusion.
- Statement that your PIER plan activities and strategies are tailored to the proposed research project and aligned with Institute-wide and/or departmental and local resources.

#### Composition of the Project Team (aligns with review criteria 1 and 2)

*Including, but not limited to:* Information and/or specific strategies and resources you will leverage to enhance the participation and/or recruitment of individuals from underrepresented backgrounds, individuals from groups historically underrepresented in the research area, or from underrepresented communities.

#### – Examples

- MIT or other resources that you will leverage to recruit or host underrepresented students (undergraduate or graduate) in your lab.
- Information about how you will partner with individuals from institutions historically underrepresented in Federal research, such as
  - minority serving institutions or non-R1 institutions of higher education (listed in the DOE's [Institution Designations](#))
  - institutions of higher education in [EPSCoR states](#)

## Seven Organizations Selected for ORIC Cohort

**Posted On:** 06-27-2024

**Posted In:** [News](#)

The Center for Advancing Research Impact in Society (ARIS) is pleased to announce the selection of the 2024 Cohort of its [Program to Enhance Organizational Research Impact Capacity \(ORIC\)](#). The [seven organizations](#) that will form the signature program's fifth cohort are: Massachusetts Institute of Technology, Mote Marine Laboratory, Pennsylvania State University, Texas Tech University, University of Minnesota, University of Utah and Utah State University.



**PennState**



**UtahState  
University**



**UNIVERSITY  
OF MINNESOTA**



**TEXAS TECH  
UNIVERSITY.**



**THE  
UNIVERSITY  
OF UTAH**

“The mission of the ORIC program is to empower institutions to enhance their internal infrastructure for research impact support,” said Susan Renoe, ARIS Executive Director. “By boosting effective BI support at the institutional level, we amplify the benefits of research on society and its impact.”

# Early-career resources

## Early Career Funding Guide

### Finding Funding

I would like to...	Available resources	For additional help contact:
Find early career awards	Identify and receive grantsmanship advice on prestigious early career awards.  <a href="#">Early Career Award List</a>	<a href="#">Research Development</a>
Receive notices of limited submission funding opportunities and prestigious early career awards that require an internal competition  Receive a monthly digest of foundation sponsored funding opportunities	<b>MIT Fund Ops Listserv:</b> sign up to receive notices of early career and other limited submissions opportunities as well as a monthly digest of foundation funding opportunities that are not limited submissions	<a href="#">Research Development</a>
View a calendar of recurring limited submission funding opportunities	<a href="#">Limited Submissions Annual Calendar</a>	<a href="#">Research Development</a>

### Industry Funding and Moving Research to the Marketplace

I would like to...	Available resources	For additional help contact:
Connect with potential industry partners and get support for your startup	MIT <b>Corporate Relations</b> facilitates engagement between corporations, MIT, and MIT-connected startups through two integrated programs, the <a href="#">MIT Industrial Liaison Program (ILP)</a> and <a href="#">MIT Startup Exchange</a> .	<a href="#">MIT Industrial Liaison Program (ILP)</a>  <a href="#">MIT Startup Exchange</a>
Explore sponsored research and collaboration opportunities with industry and other non-federal sponsors and collaborators, or get help developing an opportunity in this area	<b>Office of Strategic Alliances and Technology Transfer (OSATT):</b>  OSATT Core works with MIT researchers and non-federal sponsors to help develop mutually-beneficial research projects for collaboration and sponsorship, negotiate sponsored research and collaboration agreements, and support ongoing research engagements, particularly master research agreements. Catalysts serve as a first point of contact for MIT PIs engaging with industry, to help align expectations early in the negotiation process, and then as a navigator through MIT's administrative processes.	<a href="#">OSATT Core</a>

# We welcome your feedback!

1. What improvements or changes would you like to see in our limited submissions process?
2. What is your role, if any, do you or your team play in helping faculty to identify funding opportunities?
3. How are you supporting proposal development efforts for faculty? Are you providing support for non-technical components like broader impact plans, managements plans, etc.
4. Are you aware of the finding funding tools PIVOT or Foundation Directory Online? Are your faculty aware of these tools? What are strategies to increase awareness of these tools?
5. Others?

# Thank You!

Please send your questions and feedback to [Researchdev@mit.edu](mailto:Researchdev@mit.edu)